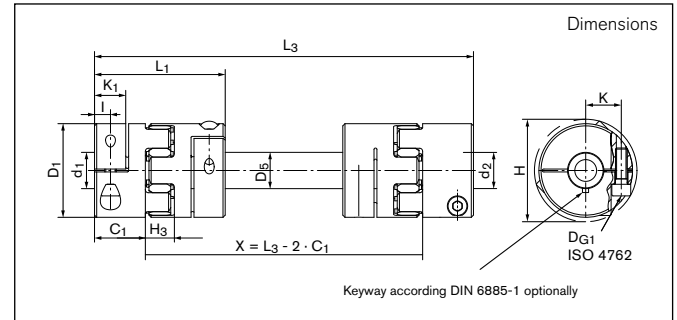
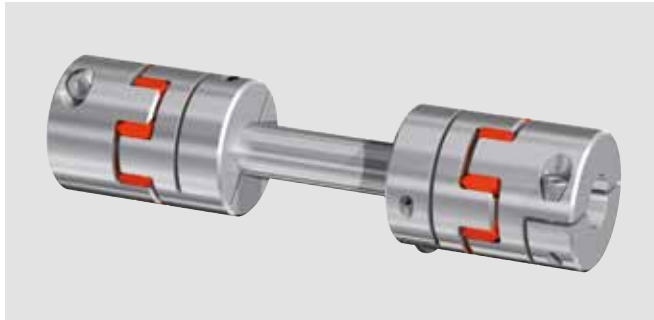


Backlash-free Line shafts

GERWAH® GWZ 5104.1



Dimensions

- d₁, d_{2min}** = Min. bore diameter
- d₁, d_{2max}** = Max. bore diameter
- d_{1k}, d_{2kmin}** = Min. bore diameter with keyway acc. to DIN 6885-1
- d_{1k}, d_{2kmax}** = Max. bore diameter with keyway acc. to DIN 6885-1
- C₁** = Guided length in hub boring
- D₁** = Outer diameter
- D₅** = Tube diameter
- H** = Clearance diameter
- H₃** = Length of damping part
- I** = Distance between center screw hole and hub end
- K** = Distance shaft axis - clamping screw axis
- K₁** = Clamping length
- L₁** = Length of coupling
- L_{3min}** = Min. length of inside shaft
- L_{3max}** = Max. length of inside shaft

Size	d ₁ ; d ₂ min-max		d _{1k} ; d _{2k} min-max		C ₁	D ₁	D ₅	H	H ₃	I	K	K ₁	L ₁	L ₃ min-max
	Without keyway	With keyway	mm	mm										
14	5 - 16	5 - 16	11	30	16	33	13	5	11	11	35	80 - 2000		
19	6 - 20	6 - 20	25	40	20	46	16	12	14,5	25	66	135 - 2000		
24	10 - 32	10 - 32	30	55	25	57	18	10,5	20	19	78	160 - 2000		
28	10 - 38	10 - 38	35	65	30	71	20	11,5	24,5	21,5	90	185 - 2000		
38	12 - 48	12 - 48	45	80	40	83	24	15,5	30	31	114	230 - 2000		
42	14 - 54	14 - 54	50	95	40	95	26	18	32,5	32	126	255 - 2000		
48	15 - 60	15 - 60	56	105	50	104,5	28	21	36	38	140	290 - 2000		

Transmission of the couplings transmissible torque T can not longer be guaranteed for certain with borings < d_{min}. Types with borings < d_{min}, however, can be supplied. Moment of inertia and weight (mass) are calculated with reference to the largest bore size.

To continue see next page

Backlash-free Line shafts
GERWAH® GWZ 5104.1
Technical Data

T = Transmissible torque at given T_A
H_{es} = Hardness of the elastomeric spider

c (pro m) = Torsional stiffness of extension tube
D_{G1} = Thread diameter

T_{A1} = Tightened torque of clamping screw (G1)

Size	T	H _{es}	C (pro m)	D _{G1}	T _{A1}
	Nm		Nm/rad	mm	Nm
14	12,5	98 SH A	510	1 x M3	2
19	17	98 SH A	1250	1 x M6	11
24	60	98 SH A	2480	1 x M6	15
28	160	98 SH A	6350	1 x M8	32
38	325	98 SH A	20085	1 x M8	38
42	450	98 SH A	20085	1 x M10	84
48	525	98 SH A	48980	1 x M12	145

Transmissible torque T [Nm]

Size	Ø5	Ø6	Ø8	Ø9	Ø10	Ø12	Ø14	Ø15	Ø16	Ø18	Ø20	Ø22	Ø24	Ø25	Ø30	Ø35	Ø40	Ø45	Ø50	Ø55	Ø58
14	4,8	6,0	7,7	8,6	9,4	11	12,5	12,5	12,5	---	---	---	---	---	---	---	---	---	---	---	---
19	---	16	17	17	17	17	17	17	17	17	17	---	---	---	---	---	---	---	---	---	---
24	---	---	---	---	37	43	50	53	56	60	60	60	60	60	60	---	---	---	---	---	---
28	---	---	---	---	61	72	83	88	94	104	114	124	134	138	160	160	---	---	---	---	---
38	---	---	---	---	---	87	100	107	113	126	138	151	163	168	197	225	251	277	---	---	---
42	---	---	---	---	---	---	174	186	197	220	242	264	285	296	348	398	450	450	---	---	---
48	---	---	---	---	---	---	---	---	276	309	343	376	408	424	502	525	525	525	525	525	525

Ordering example: GWZ 5104.1

Series/Size	Total length	Bore diameter d ₁	Bore diameter d ₂	Further details
GWZ 5104.1-14	250	10	14	*

* Keyway

Subject to technical changes.