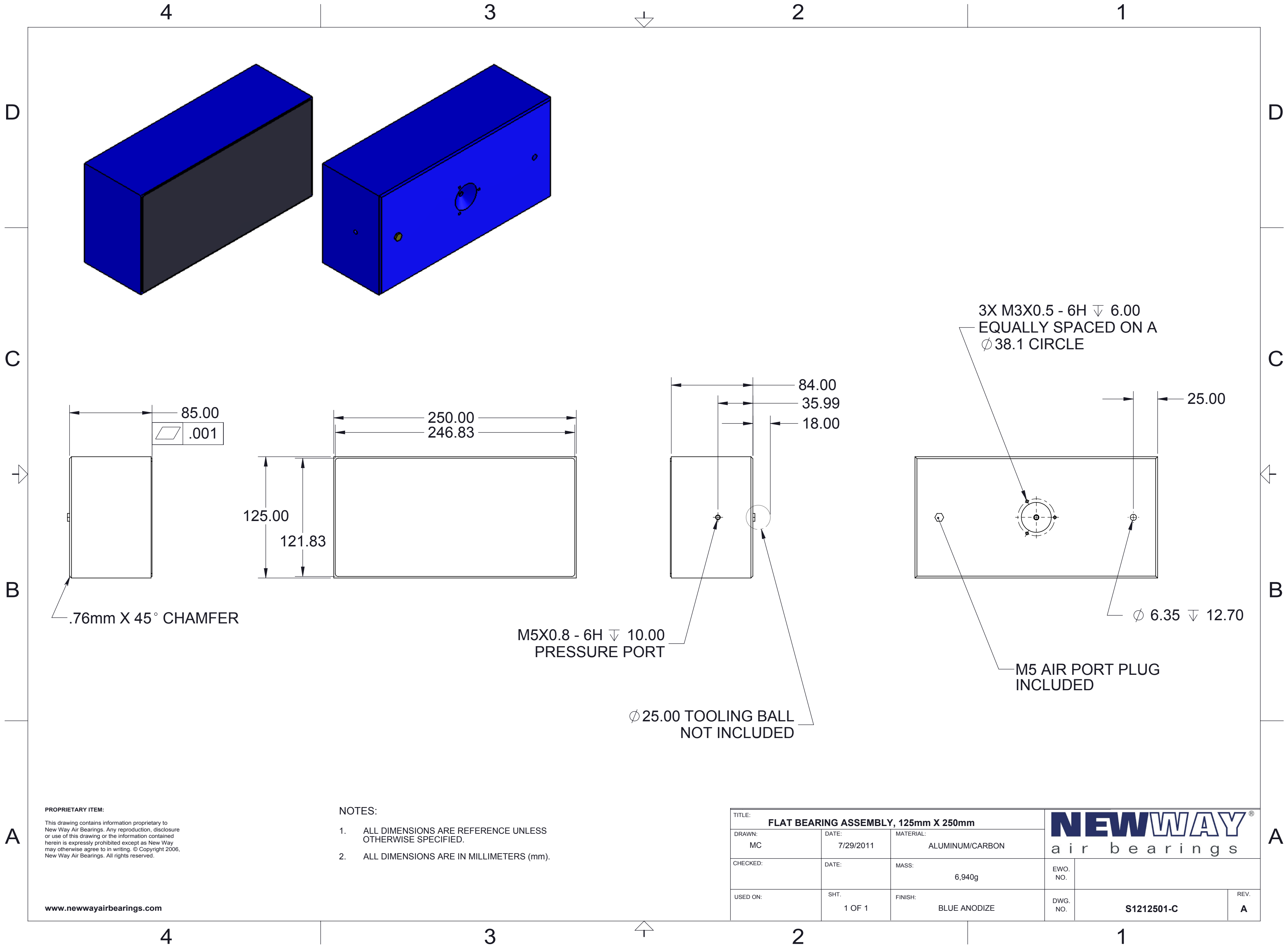


SPECIFICATIONS: 50mm x 100mm #S125001

Input Pressure	.41 MPa (60psi)
Ideal Load N (lbs)	1112 (250)
Stiffness N/micron (lbs/u in)¹	110 (0.63)
Flow NLPM (SCFH)¹	2.1 (4.5)
Fly Height¹	5 microns
Bearing Size	50mm x 100mm
Bearing Height mm (in)	25 (0.98)
Bearing Weight grams (oz.)	295 (10.4)
Housing Material/Finish	Aluminum/Anodized
Porous Media Material	Carbon
Bearing Face Surface Size - Carbon mm (in)	48.11 x 98.10 (1.89 x 3.86)
Flatness mm (in)	0.0005 (0.00002)
Ball Socket Size	13mm
Pressure Port Thread	M5 x 0.8
Viable Pressure Range	.414-.552MPa (60psi - 80psi)
Maximum Allowable Pressure Supply	.689 MPa (100psi)
Resolution³	Infinite
Maximum Speed⁴	50m/sec
Common Guide Surfaces	Granite, hard-coated aluminum, ceramics, glass, stainless steel, plated steel
Suggested Guide Surface Finish⁵	16 RMS




PROPRIETARY ITEM:

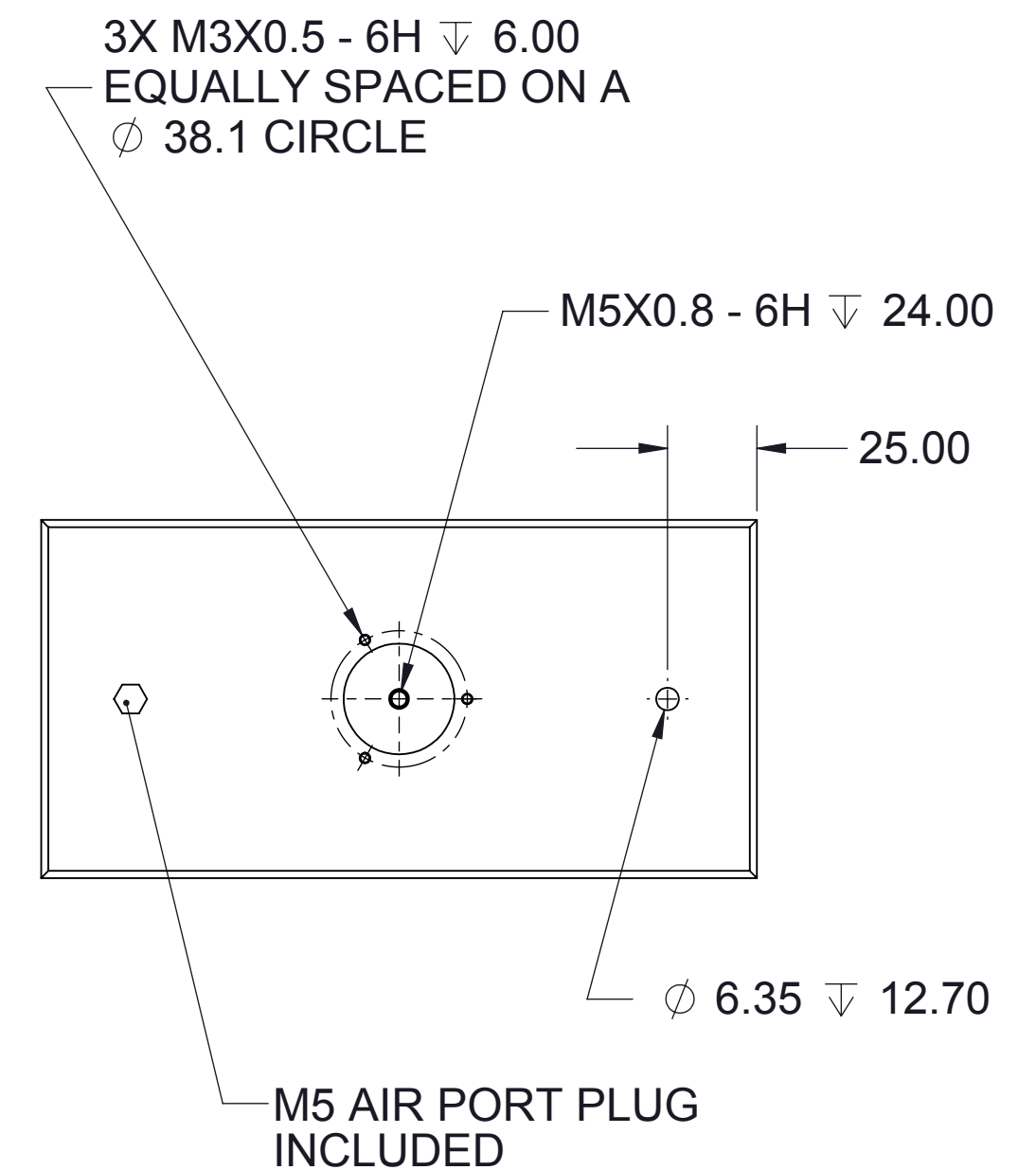
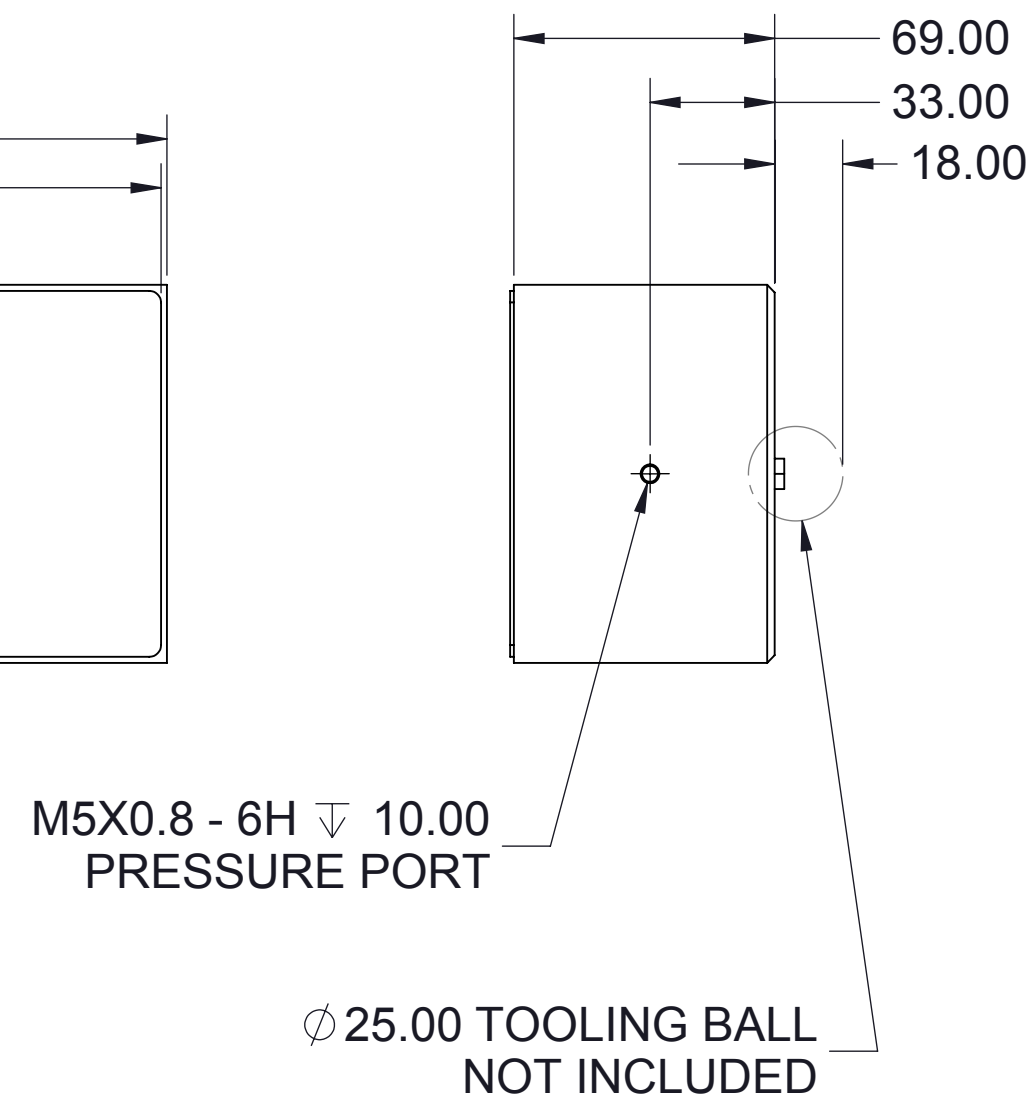
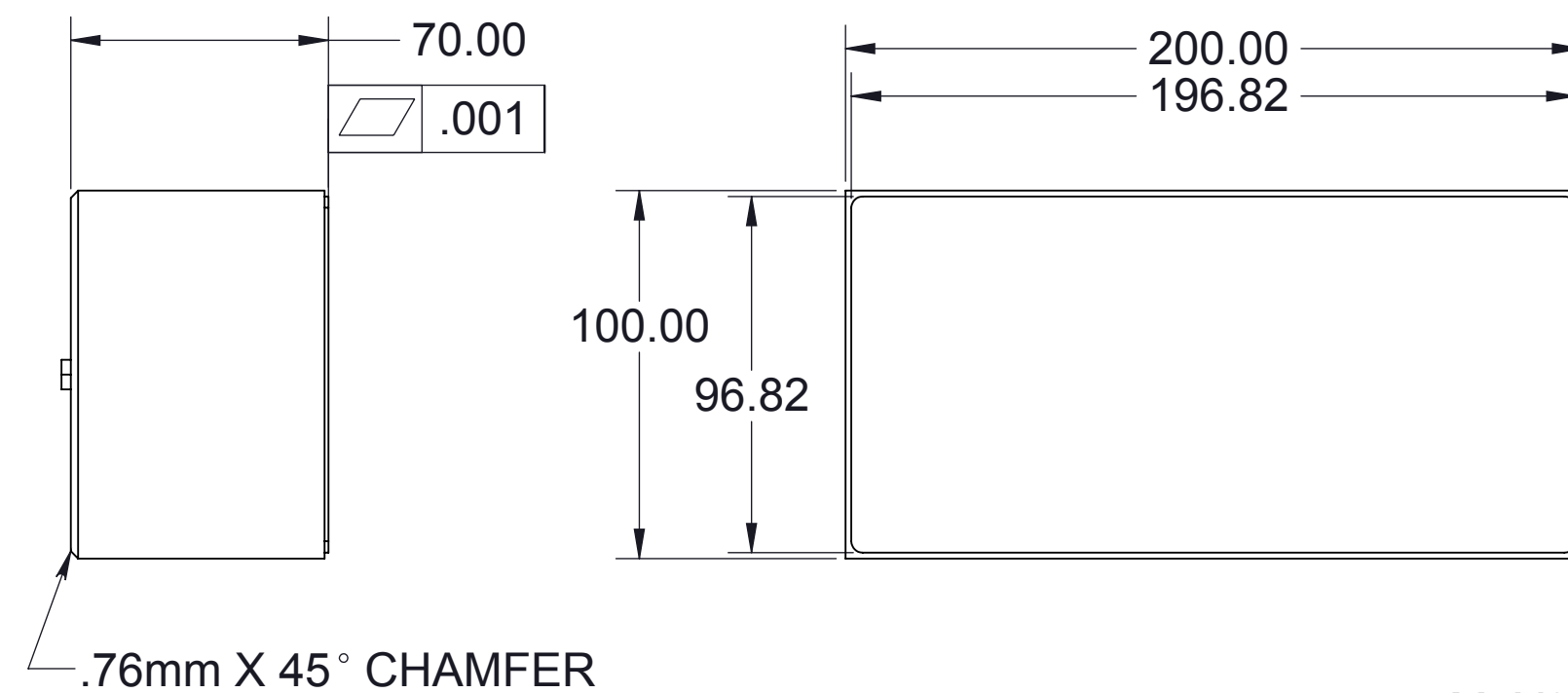
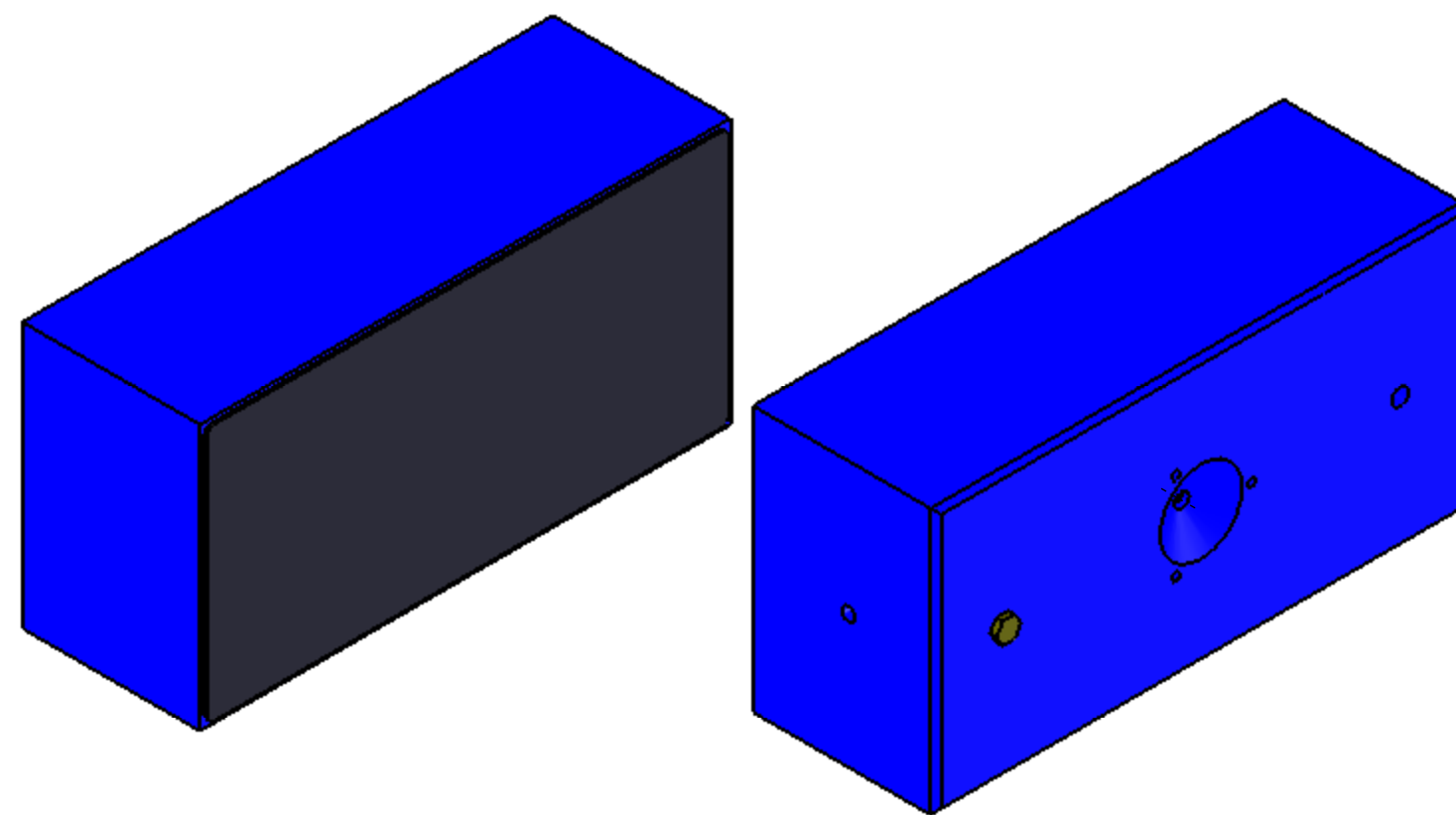
This drawing contains information proprietary to New Way Air Bearings. Any reproduction, disclosure or use of this drawing or the information contained herein is expressly prohibited except as New Way may otherwise agree to in writing. © Copyright 2006, New Way Air Bearings. All rights reserved.

www.newwayairbearings.com

NOTES:

1. ALL DIMENSIONS ARE REFERENCE UNLESS OTHERWISE SPECIFIED.
2. ALL DIMENSIONS ARE IN MILLIMETERS (mm).

TITLE: FLAT BEARING ASSEMBLY, 125mm X 250mm					
DRAWN: MC	DATE: 7/29/2011	MATERIAL: ALUMINUM/CARBON			
CHECKED:	DATE:	MASS: 6,940g	EWO. NO.		
USED ON:	SHT. 1 OF 1	FINISH: BLUE ANODIZE	DWG. NO.	S1212501-C	REV. A



PROPRIETARY ITEM:

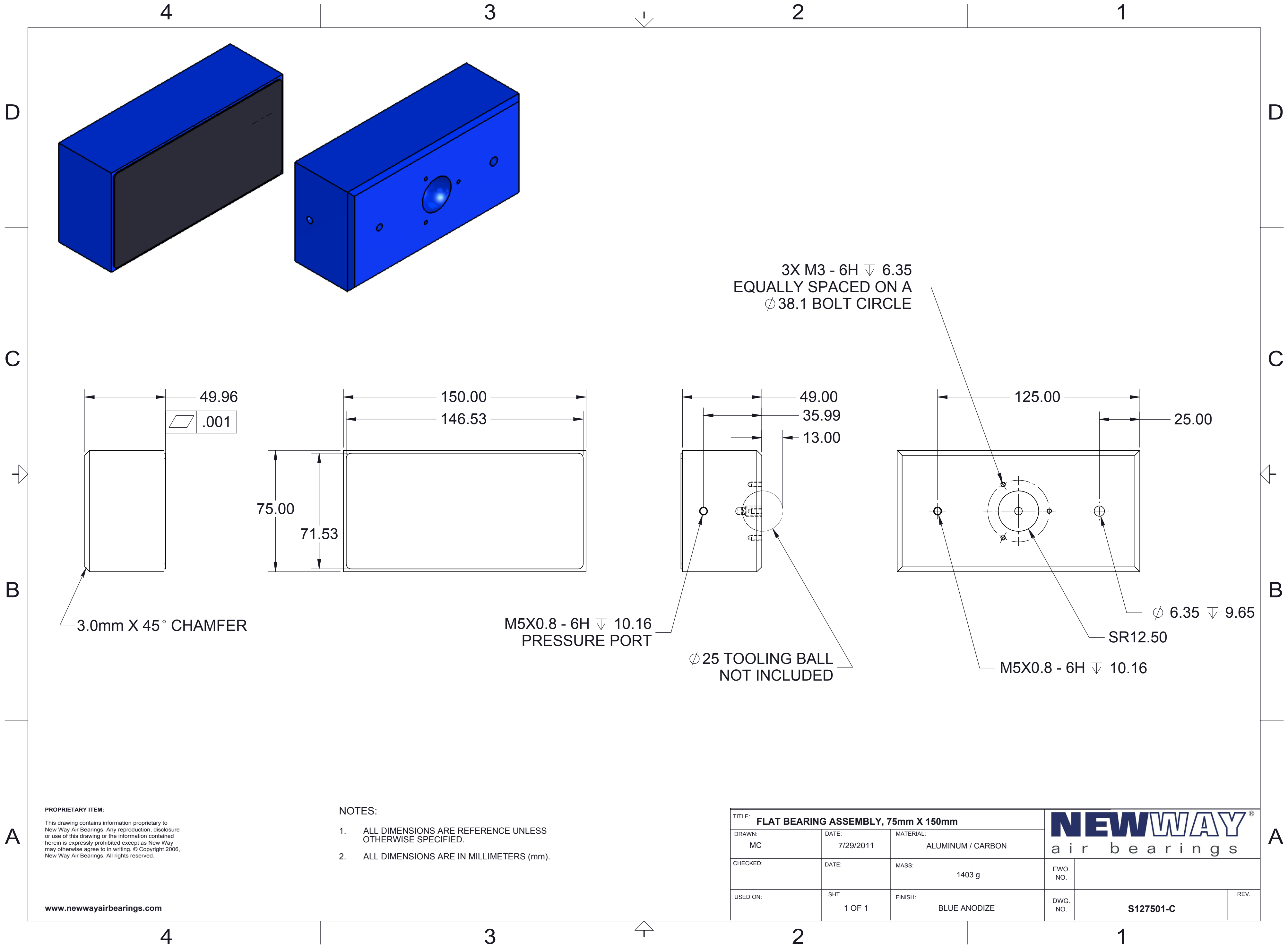
This drawing contains information proprietary to New Way Air Bearings. Any reproduction, disclosure or use of this drawing or the information contained herein is expressly prohibited except as New Way may otherwise agree to in writing. © Copyright 2006, New Way Air Bearings. All rights reserved.

www.newwayairbearings.com

NOTES:

1. ALL DIMENSIONS ARE REFERENCE UNLESS OTHERWISE SPECIFIED.
2. ALL DIMENSIONS ARE IN MILLIMETERS (mm).

TITLE: FLAT BEARING ASSEMBLY, 100mm X 200mm					
DRAWN: MC	DATE: 7/29/2011	MATERIAL: ALUMINUM/CARBON			
CHECKED:	DATE:	MASS: N/A	EWO. NO.		
USED ON:	SHT. 1 OF 1	FINISH: BLUE ANODIZE	DWG. NO.	S1210001-C	REV. A



PROPRIETARY ITEM:

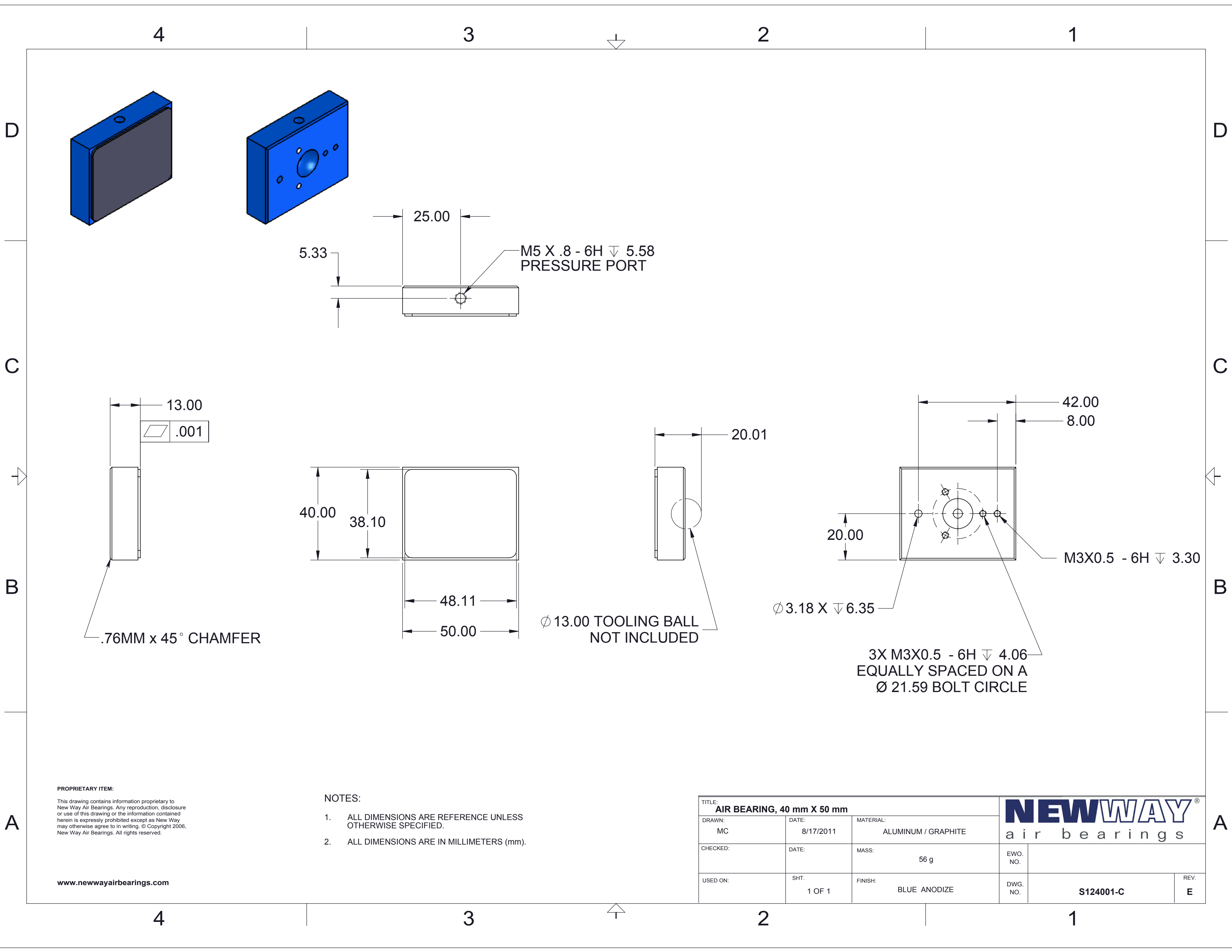
This drawing contains information proprietary to New Way Air Bearings. Any reproduction, disclosure or use of this drawing or the information contained herein is expressly prohibited except as New Way may otherwise agree to in writing. © Copyright 2006, New Way Air Bearings. All rights reserved.

www.newwayairbearings.com

NOTES:

1. ALL DIMENSIONS ARE REFERENCE UNLESS OTHERWISE SPECIFIED.
2. ALL DIMENSIONS ARE IN MILLIMETERS (mm).

TITLE: FLAT BEARING ASSEMBLY, 75mm X 150mm			NEWWAY [®] air bearings		
DRAWN: MC	DATE: 7/29/2011	MATERIAL: ALUMINUM / CARBON			
CHECKED:	DATE:	MASS: 1403 g	EWO. NO.		
USED ON:	SHT. 1 OF 1	FINISH: BLUE ANODIZE	DWG. NO.	S127501-C	REV.

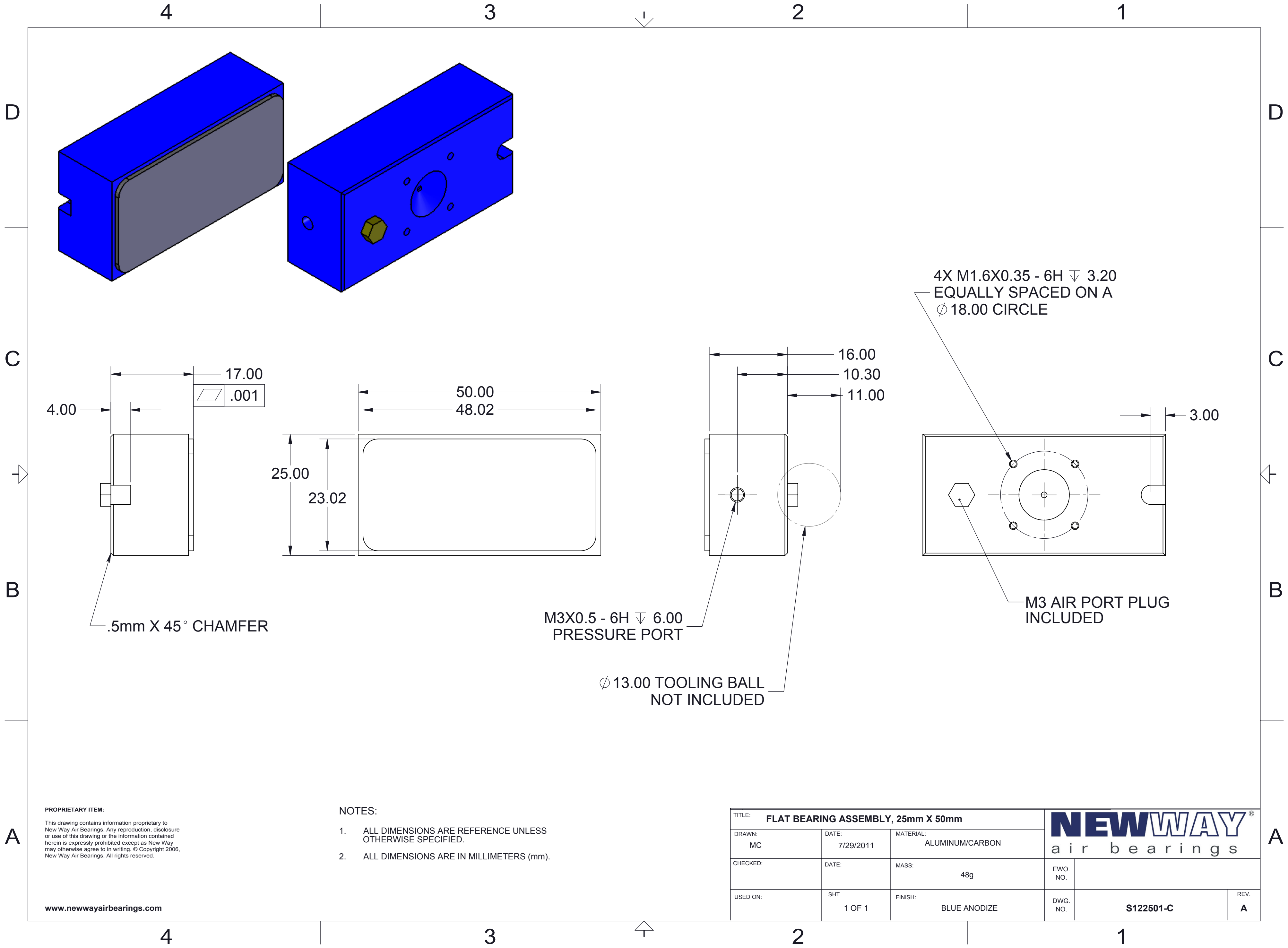


PROPRIETARY ITEM:
This drawing contains information proprietary to New Way Air Bearings. Any reproduction, disclosure or use of this drawing or the information contained herein is expressly prohibited except as New Way may otherwise agree to in writing. © Copyright 2006, New Way Air Bearings. All rights reserved.

www.newwayairbearings.com

- NOTES:
1. ALL DIMENSIONS ARE REFERENCE UNLESS OTHERWISE SPECIFIED.
 2. ALL DIMENSIONS ARE IN MILLIMETERS (mm).

TITLE: AIR BEARING, 40 mm X 50 mm			NEWWAY [®] a i r b e a r i n g s		
DRAWN: MC	DATE: 8/17/2011	MATERIAL: ALUMINUM / GRAPHITE			
CHECKED:	DATE:	MASS: 56 g	EWO. NO.		
USED ON:	SHT. 1 OF 1	FINISH: BLUE ANODIZE	DWG. NO.	S124001-C	REV. E



PROPRIETARY ITEM:

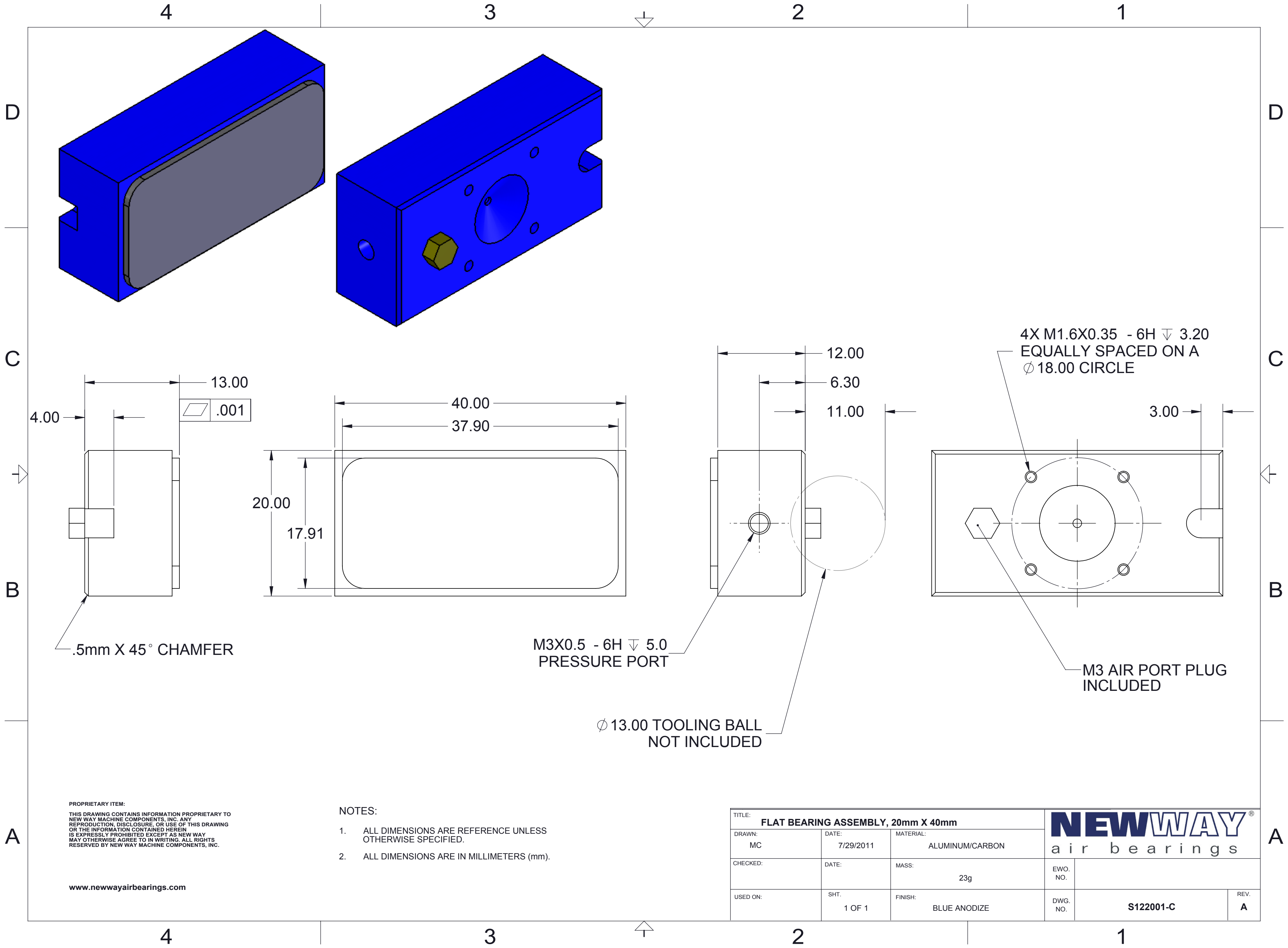
This drawing contains information proprietary to New Way Air Bearings. Any reproduction, disclosure or use of this drawing or the information contained herein is expressly prohibited except as New Way may otherwise agree to in writing. © Copyright 2006, New Way Air Bearings. All rights reserved.

www.newwayairbearings.com

NOTES:

1. ALL DIMENSIONS ARE REFERENCE UNLESS OTHERWISE SPECIFIED.
2. ALL DIMENSIONS ARE IN MILLIMETERS (mm).

TITLE: FLAT BEARING ASSEMBLY, 25mm X 50mm			<div>NEWWAY[®]</div> <div>air bearings</div>		
DRAWN: MC	DATE: 7/29/2011	MATERIAL: ALUMINUM/CARBON			
CHECKED:	DATE:	MASS: 48g	EWO. NO.		
USED ON:	SHT. 1 OF 1	FINISH: BLUE ANODIZE	DWG. NO.	S122501-C	REV. A



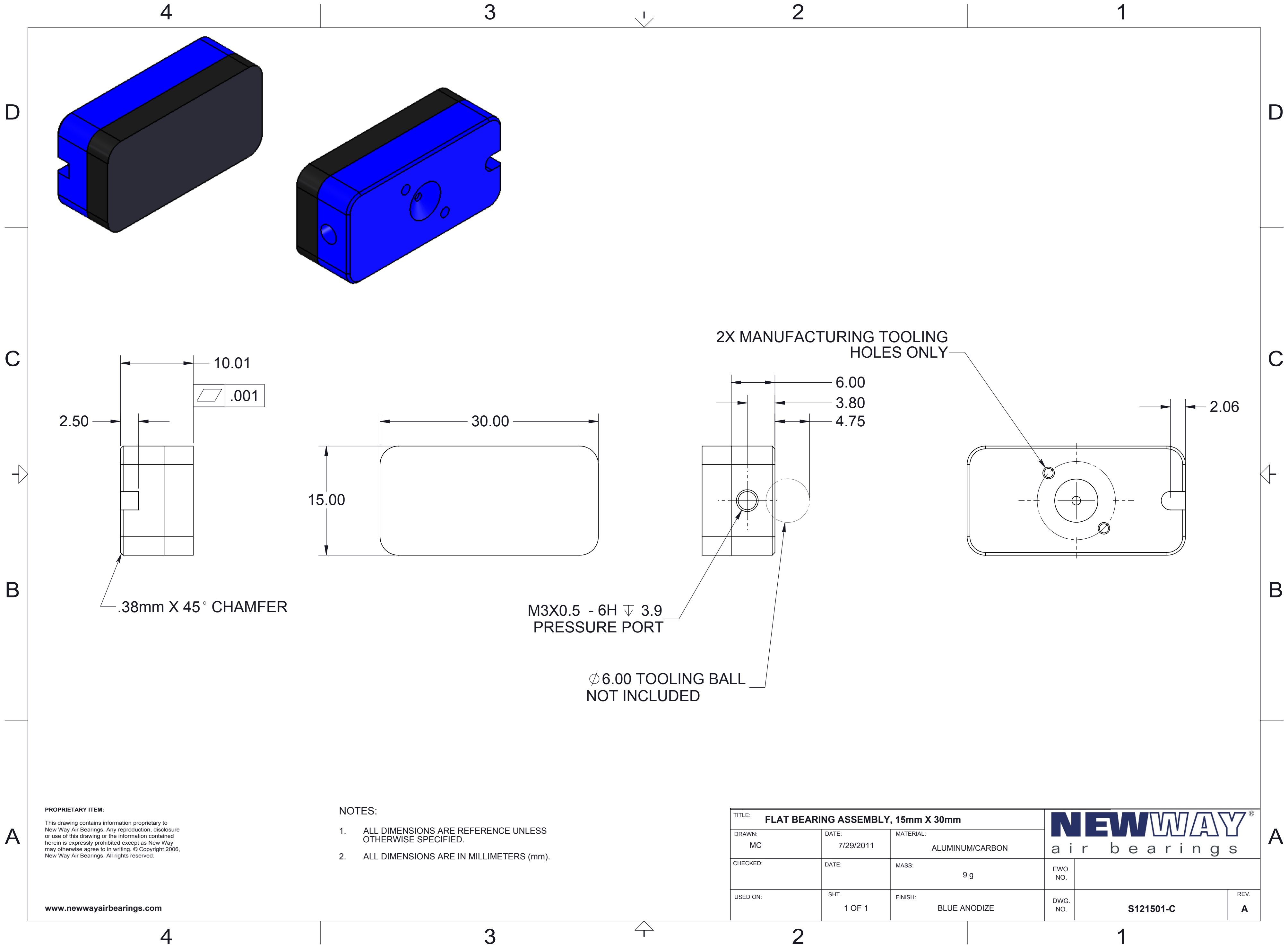
PROPRIETARY ITEM:
THIS DRAWING CONTAINS INFORMATION PROPRIETARY TO
NEW WAY MACHINE COMPONENTS, INC. ANY
REPRODUCTION, DISCLOSURE, OR USE OF THIS DRAWING
OR THE INFORMATION CONTAINED HEREIN
IS EXPRESSLY PROHIBITED EXCEPT AS NEW WAY
MAY OTHERWISE AGREE TO IN WRITING. ALL RIGHTS
RESERVED BY NEW WAY MACHINE COMPONENTS, INC.

www.newwayairbearings.com

NOTES:

1. ALL DIMENSIONS ARE REFERENCE UNLESS OTHERWISE SPECIFIED.
2. ALL DIMENSIONS ARE IN MILLIMETERS (mm).

TITLE: FLAT BEARING ASSEMBLY, 20mm X 40mm			NEWWAY [®] a i r b e a r i n g s		
DRAWN: MC	DATE: 7/29/2011	MATERIAL: ALUMINUM/CARBON			
CHECKED:	DATE:	MASS: 23g	EWO. NO.	S122001-C	
USED ON:	SHT. 1 OF 1	FINISH: BLUE ANODIZE	DWG. NO.		
				REV. A	

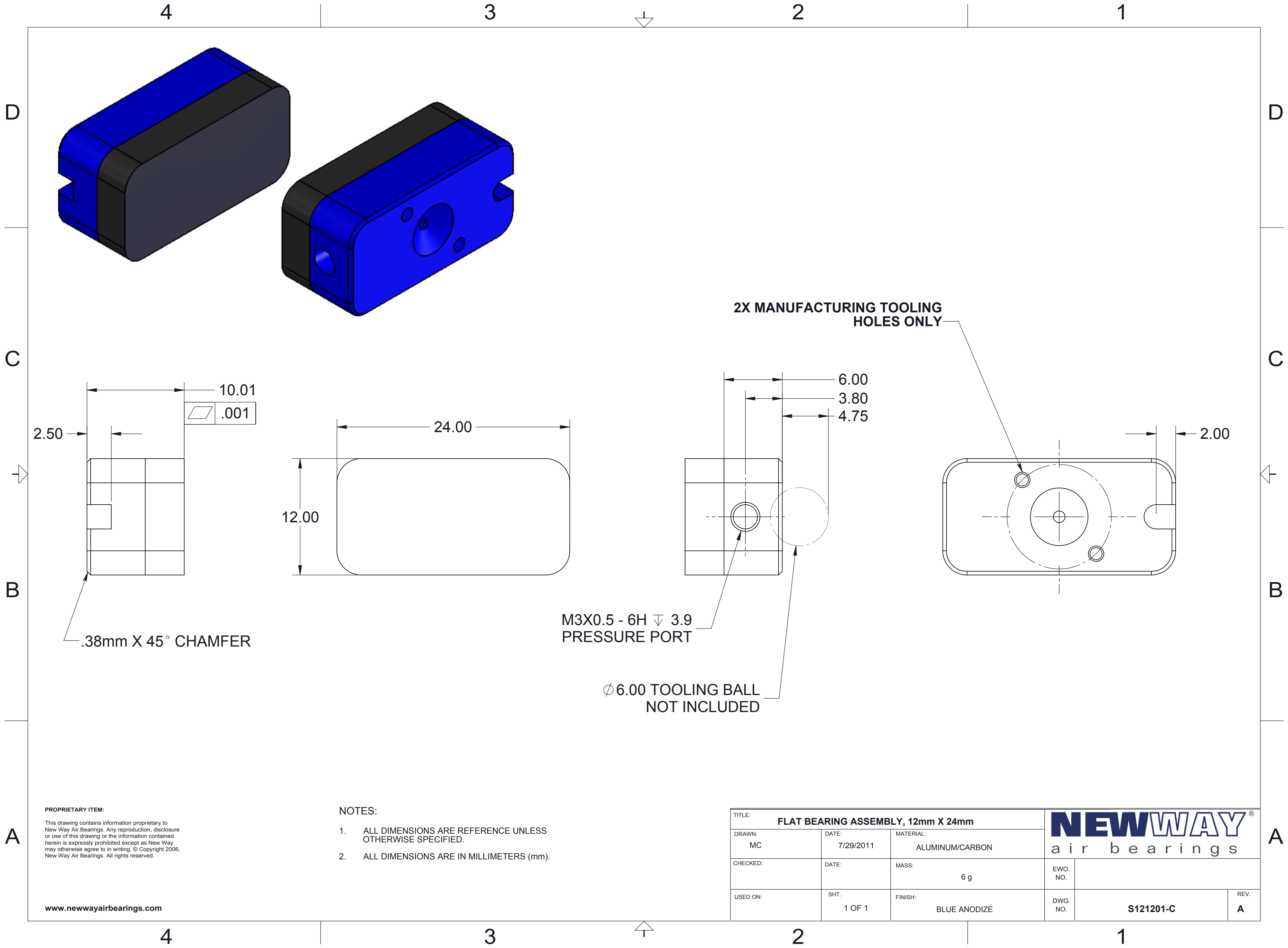


PROPRIETARY ITEM:
This drawing contains information proprietary to New Way Air Bearings. Any reproduction, disclosure or use of this drawing or the information contained herein is expressly prohibited except as New Way may otherwise agree to in writing. © Copyright 2006, New Way Air Bearings. All rights reserved.

www.newwayairbearings.com

- NOTES:
1. ALL DIMENSIONS ARE REFERENCE UNLESS OTHERWISE SPECIFIED.
 2. ALL DIMENSIONS ARE IN MILLIMETERS (mm).

TITLE: FLAT BEARING ASSEMBLY, 15mm X 30mm			NEWWAY [®] air bearings		
DRAWN: MC	DATE: 7/29/2011	MATERIAL: ALUMINUM/CARBON			
CHECKED:	DATE:	MASS: 9 g	EWO. NO.		
USED ON:	SHT. 1 OF 1	FINISH: BLUE ANODIZE	DWG. NO.	S121501-C	REV. A



PROPRIETARY ITEM:

This drawing contains information proprietary to New Way Air Bearings. Any reproduction, disclosure or use of this drawing or the information contained herein is expressly prohibited except as New Way may otherwise agree to in writing. © Copyright 2006, New Way Air Bearings. All rights reserved.

www.newwayairbearings.com

NOTES:

1. ALL DIMENSIONS ARE REFERENCE UNLESS OTHERWISE SPECIFIED.
2. ALL DIMENSIONS ARE IN MILLIMETERS (mm).

TITLE: FLAT BEARING ASSEMBLY, 12mm X 24mm			NEWWAY air bearings		
DRAWN: MC	DATE: 7/29/2011	MATERIAL: ALUMINUM/CARBON			
CHECKED:	DATE:	MASS: 6 g	EWO. NO.		
USED ON:	SHT. 1 OF 1	FINISH: BLUE ANODIZE	DWG. NO. S121201-C	REV. A	